

Eptascope ADS-100 Automatic Detection System

INTELLIGENT CCTV

At the foundation of Eptascope Automatic Detection System is the task of automatic analysis of video content the way humans perceive visual information.

Video surveillance relies mostly on the ability of control room operators to detect meaningful changes and possible security threats. Detecting such situations as early as they arise has a major impact in the effectiveness of CCTV systems in crime detection and prevention.

The Eptascope ADS-100 increases the efficiency of your security personnel by assisting them in detecting events and potential threats while monitoring live video, and in performing rapid searches through existing recorded video during an investigation.

By analyzing the scene in the video in real-time, the ADS-100 detects incidents as they occur and the appropriate camera is automatically switched to a monitor.

By recording video only before and after events are detected, an investigator can browse video very effectively.

APPLICATIONS

Abandoned Objects

Tailgating

PTZ Automatic Tracking

Direction Flow

Large Vehicles Detection

Trespassing

Removed Objects

Advanced Motion Detection

Loitering Detection

BENEFITS

Intelligent Video Behavioral Analysis

Automating Video Surveillance Tasks

Connect to Existing CCTV Systems

Plug-and-Play Setup

FEATURES

Content-Based Video Annotations

Connect to Existing CCTV Systems

MJPEG Video and XML Over IP Networks

Based on MPEG-7 ISO Standard and XML

Cost Effective

Stand-alone DSP-Based

Event Management Software Bundled

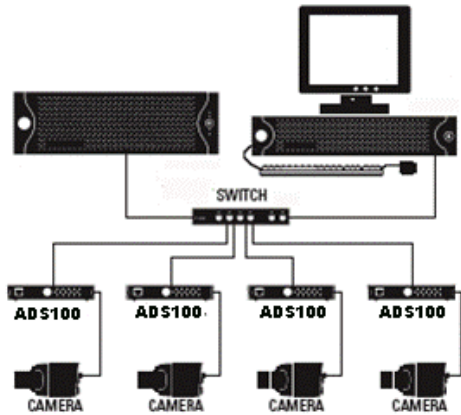
MPEG-7 Video Analysis

Eptascope™

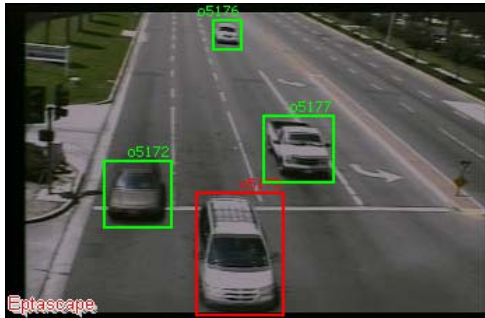
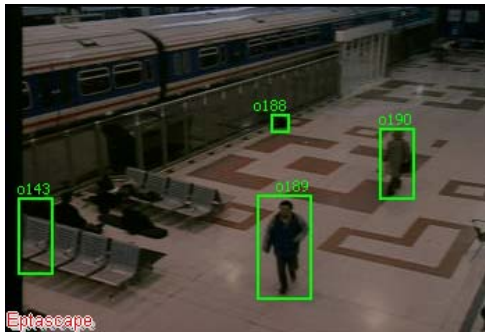
Phone: (650)353-3397
E-mail: info@eptascope.com
www.eptascope.com

Eptascope, Inc.
1000 Elwell Court, Suite 101
Palo Alto, CA 94303

CCTV INTEGRATION



VIDEO ANALYTICS



▶ Technical Specifications

The Eptascape ADS-100 uses advances in computer vision and a proprietary MPEG-7 video encoder to perform automatic video analysis and to extract information about the content in the video (meta-data). MPEG-7 is the emerging international standard for “Multimedia Content Description” and the Eptascape encoder in the ADS-100 is automatically generating content-based video annotations meta-data according to the standard.

VIDEO

Video Standards	NTSC/PAL
Video Inputs	1 BNC
Video Resolution	CIF: NTSC 352 x 240, PAL 352 x 288
Compression	MJPEG

ENCODER

Video Streaming	Motion JPEG Multiple Streams Controllable frame rate, Privacy Encryption.
Frame Rate	Up to 15 - 25 frames per second (1 channel)
MPEG-7 Encoding	XML Visual Descriptors (ISO 15938 Part 3)

NETWORK

Ethernet	10/100 Mbps IEEE 802.3
Supported Protocols	HTTP, TCP, DHCP, NTP, DNS

POWER and DIMENSIONS

Voltage	6.2 DC
Power Consumption	max 2 A
Size	4.5L x 4.25W x 2.25H in.

REGULATORY

USA and Canada	FCC Part 15, Subpart B, Class A
----------------	---------------------------------



Phone: (650)353-3397
E-mail: info@eptascape.com
www.eptascape.com

Eptascape, Inc.
1000 Elwell Court, Suite 101
Palo Alto, CA 94303